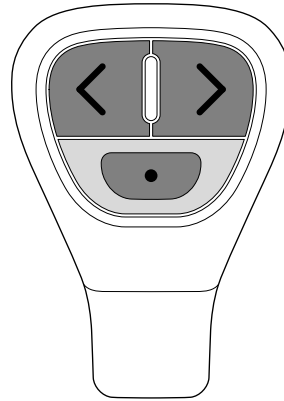


RCU-3



Installation and operation instructions

English

Date: 07-2012

Document number: 87139-2-EN

© 2012 Raymarine UK Limited

Trademark and patents notice

Autohelm, hsb², RayTech Navigator, Sail Pilot, SeaTalk, SeaTalk^{NG}, SeaTalk^{HS} and Sportpilot are registered trademarks of Raymarine UK Limited. RayTalk, Seahawk, Smartpilot, Pathfinder and Raymarine are registered trademarks of Raymarine Holdings Limited.

FLIR is a registered trademark of FLIR Systems, Inc. and/or its subsidiaries.

All other trademarks, trade names, or company names referenced herein are used for identification only and are the property of their respective owners.

This product is protected by patents, design patents, patents pending, or design patents pending.

Fair Use Statement

You may print no more than three copies of this manual for your own use. You may not make any further copies or distribute or use the manual in any other way including without limitation exploiting the manual commercially or giving or selling copies to third parties.

Copyright ©2012 Raymarine UK Ltd. All rights reserved.

Contents

Declaration of conformity.....	7
Compliance Statement (Part 15.19)	7
Installation and set-up.....	7
Operating principles.....	8
Remote control functions.....	9
Customizing the SHORTCUT button	9
Reconnecting the RCU	10
Appendix A Technical specification	11



Warning: Maintain a permanent watch

Always maintain a permanent watch, this will allow you to respond to situations as they develop. Failure to maintain a permanent watch puts yourself, your vessel and others at serious risk of harm.



Warning: FCC Warning (Part 15.21)

Changes or modifications to this equipment not expressly approved in writing by Raymarine Incorporated could violate compliance with FCC rules and void the user's authority to operate the equipment.

Declaration of conformity

Raymarine UK Ltd. declares that this product is compliant with the essential requirements of R&TTE directive 1999/5/EC.

The original Declaration of Conformity certificate may be viewed on the relevant product page at www.raymarine.com.

Compliance Statement (Part 15.19)

This device complies with Part 15 of the FCC Rules. Operation is subject to the following two conditions:

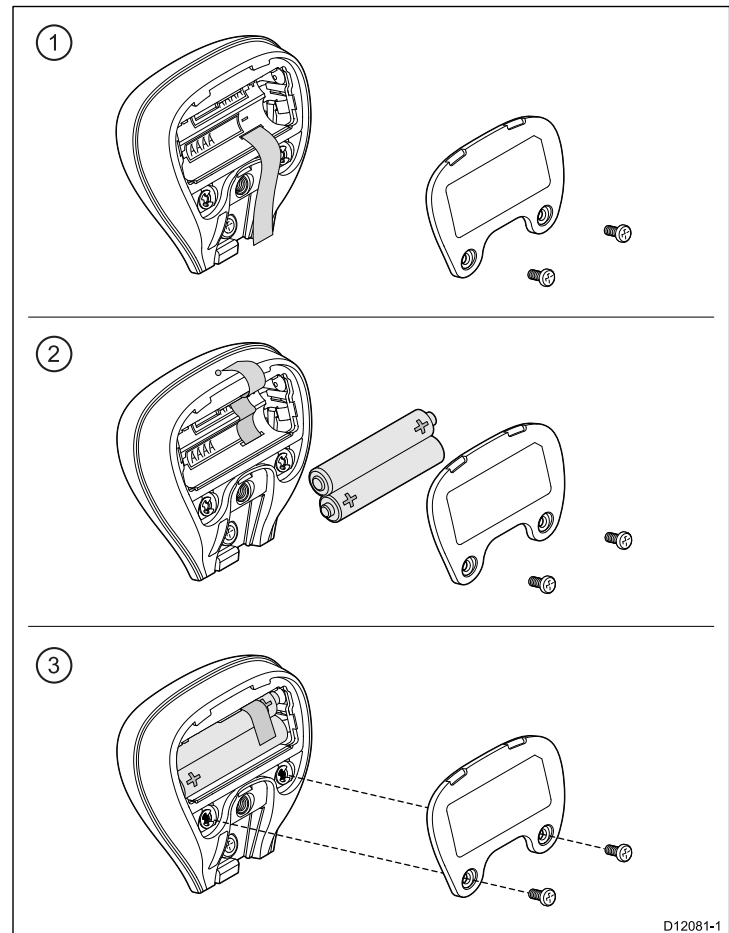
1. This device may not cause harmful interference.
2. This device must accept any interference received, including interference that may cause undesired operation.

Installation and set-up

Installation and set-up of the remote control unit involves the following:

- Inserting the batteries.
- Pairing the remote control unit with a compatible multifunction display.
- Configuring the **UP** and **DOWN** buttons.
- Mounting the remote control unit to a steering wheel (if required). Alternatively a lanyard is supplied for wearing the remote control unit around your neck.
- Customizing the **SHORTCUT** button (optional).

Inserting and replacing batteries



1. Remove the screws on the back panel to reveal the battery compartment.
2. Ensure the ribbon is positioned flush against the bottom of the battery compartment, as shown in the diagram above. Gently insert 2x AAAA batteries into the compartment. Ensure that you observe the correct polarity, as indicated in the battery compartment.
3. Ensure the ribbon is accessible once the batteries are in place. Replace the back cover and tighten screws, ensuring that the ribbon does not get trapped in the casing.

Note: A warning message is displayed on the multifunction display when the remote control unit batteries are running low. After replacing the batteries you must hold down any button on the remote for 2 seconds to reconnect with the display. If the remote will not be used for a prolonged period, remove the batteries to avoid leakage or unnecessary power drain.

Pairing the remote and configuring the UP and DOWN buttons

The remote control unit must be "paired" with the multifunction display that you want to control. On your multifunction display, with the homescreen displayed:

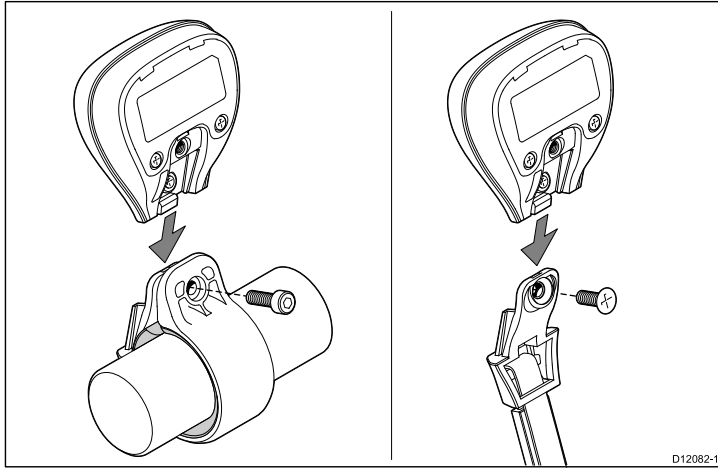
1. Select **Set-up**.
2. Select **System Settings**.
3. Select **Wireless Connections**.
4. Select **Bluetooth > On**.
5. Select **New Bluetooth Connection**.
A pop-up message will be displayed to confirm that the device you are connecting to is discoverable.
6. Select **Ok** to confirm.
7. On your **remote control unit**, hold down the UP and DOWN buttons together for 10 seconds.
8. Select OK to clear the on-screen message.
A list of discovered devices is displayed.
9. Select the remote control unit in the list of devices.

10. When prompted, press the arrow button on your remote that you wish to be configured as the UP button. The other arrow button will automatically be configured as the DOWN button.

If the pairing was successful a "Pairing Success" message will be displayed. If a "Pairing Failure" or "Pairing Timeout" message is displayed, repeat steps 1 to 9.

Mounting the remote control unit

The remote control unit can be worn around your neck or mounted to a steering wheel. Adaptors are provided for both methods.



1. **For lanyard use:** attach the supplied lanyard to the unit and secure it with the supplied screw.
2. **For steering wheel use:** Choose a suitable location for the unit that is within reach and within 5 meters of the multifunction display that you want to control.
3. Choose a suitable orientation for the unit. It can be used with the buttons facing towards or away from the steering wheel.
4. A range of steering wheel adaptors is supplied. Select the adaptor that best suits the thickness of your steering wheel.
5. Wrap the adaptor around the wheel at the mounting position.
6. Gently pull apart the supplied clasp and wrap it around the adaptor and the steering wheel.
7. Push the remote on to the clasp, ensuring a good fit.
8. Tighten the screw until the clasp is tight around the wheel.

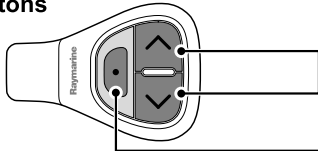
Operating principles

Remote control operating principles.

- Only 1 multifunction display may be operated by a remote control unit at any one time. You cannot pair a multifunction display to more than 1 remote control at the same time.
- The 3 buttons on the remote control unit have different functions depending on the CONTEXT in which you are using it. For example, in the chart application the buttons control different functions than they do in the homescreen.
- All functions are accessed using a combination of the 3 buttons. For some functions you must press a button **MOMENTARILY**. You can also **HOLD** a button for continuous response (for example, continuous ranging in the chart application).
- The main methods of operation involve the use of the **UP** and **DOWN** "arrow" buttons to highlight different on-screen options. The **SHORTCUT** button is used to select (execute) them.
- During the pairing process you must define which of the arrow buttons you want to be the "UP" button.
- The **SHORTCUT** button is customizable and can be configured to operate one of a number of functions, using the System Settings menu on your multifunction display.


Remote control functions

Buttons




Arrow buttons
Shortcut button

Range

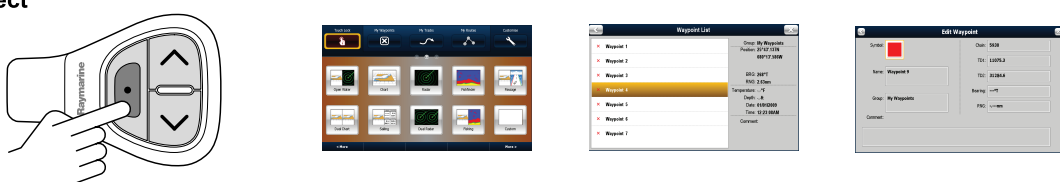


or

Pair



Select



D12051-2

Default functions:	Button	Application where function available:				
		Chart	Radar	Fishfinder	Weather	Homescreen
Range / zoom.	<ul style="list-style-type: none"> Press UP or DOWN arrow for momentary response. Hold UP or DOWN arrow for continuous response. 	✓	✓	✓	✓	✗
Open homescreen.	Shortcut: Hold	✓	✓	✓	✓	✗
Select application in homescreen (in left-to-right, top-to-bottom order).	<ul style="list-style-type: none"> Press UP or DOWN arrow for momentary response. Hold UP or DOWN arrow for continuous response. 	✗	✗	✗	✗	✓
Toggle menu items and options in dialogs and prompts (in left-to-right, top-to-bottom order).	<ul style="list-style-type: none"> Press UP or DOWN arrow for momentary response. Hold UP or DOWN arrow for continuous response. 	✓	✓	✓	✓	✓
Place waypoint at vessel position.	Shortcut	✓	✓	✓	✓	✗
Media player control (requires a Bluetooth media player paired to the multifunction display).	<ul style="list-style-type: none"> Press UP / DOWN arrow for next / previous track. Press SHORTCUT button for play / pause. 	✓	✓	✓	✓	✓
Customizable functions:						
Open homescreen.	SHORTCUT	✓	✓	✓	✓	✗
Switch active application (only available when multiple applications are displayed).	SHORTCUT	✓	✓	✓	✓	✗

Customizing the SHORTCUT button

On your multifunction display, with the homescreen displayed:

1. Select **Set-up**.

2. Select **System Settings**.

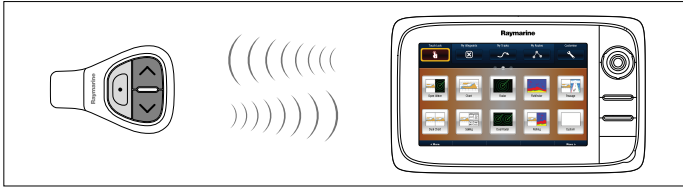
3. Select **External Devices**.

4. Select **Remote Control**.

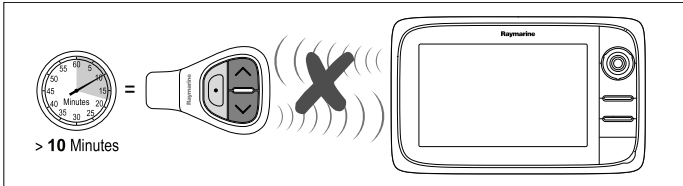
5. Select **Customize shortcut key**.
6. Select the function that you want to assign to the **SHORTCUT** key.

Reconnecting the RCU

1. When you pair the RCU-3 with a multifunction display a wireless connection is established.



2. When you power off the multifunction display it loses its connection with the RCU-3 after 10 minutes.



3. To restore the connection between the 2 units, press and hold any button on the RCU-3 for at least 3 seconds.



Note: You will also need to reconnect the RCU-3 as described above if you disable and then re-enable the Bluetooth connection on the multifunction display at any time.

Appendix A Technical specification

Power requirement	3 V dc (1.5 V dc from each of 2 x AAAA batteries). Alkaline batteries are recommended.
Typical Operating range	5 meters (line of sight)
Environmental	Operating environment <ul style="list-style-type: none">• Operating temperature: -20°C to +55°C (0 °F to 131 °F)• Non-operating temperature: -30°C to +70°C (-8 °F to 158 °F)• Relative humidity limit: 93%• Water protection: waterproof to IPX7 standard.
Data protocol	Bluetooth v2.1, HID v1.0
Conformance	Europe: <ul style="list-style-type: none">• 2004/108/EC Australia and New Zealand: <ul style="list-style-type: none">• C-Tick, Compliance Level 2 USA: <ul style="list-style-type: none">• FCC certification Japan: <ul style="list-style-type: none">• VCCI Certification China: <ul style="list-style-type: none">• CCS Certification

Raymarine[®]
A FLIR COMPANY